

■ Walt Disney's Comics and Stories – Vol. 5 No. 8 (May 1945)

Front Cover — Observations (IMG_1390)

Walt Disney's Comics and Stories – Vol. 5 No. 8 (May 1945)

Photo Condition & Quality

High-resolution, evenly lit image showing the entire front cover, including all corners, edges, and the full spine height. Tape, creases, abrasion, and paper loss are clearly visible.



Scene & Composition

Donald Duck stands holding a magnifying glass, examining a trail of red footprints. He wears his sailor outfit with a brown hat tilted back. Huey, Dewey, and Louie peer from behind a doorway at right, partially concealed. The background is a bright yellow field framed by green and brown architectural elements. The masthead *Walt Disney's Comics and Stories* appears at the top with issue text **May 1945 – Vol. 5 No. 8 – 10¢**.

Findings

- **Aged adhesive tape applied vertically along the entire spine edge**, extending approximately **6.0 inches (152 mm)** from top to bottom of the cover.
- Tape is **yellowed and opaque**, with darkened adhesive staining visible through the clear areas.
- **Paper loss beneath the tape** along the spine fold, with original cover stock missing in multiple sections and replaced functionally by tape.
- **Vertical crease approximately 5.5 inches (140 mm)** running parallel to the spine, slightly inward from the taped area.
- **Second vertical crease approximately 4.75 inches (120 mm)** running through the central yellow field.
- **Diagonal crease approximately 2.5 inches (63 mm)** crossing the lower third of the cover from left toward center.
- **Bottom-edge chipping** with multiple small paper losses ranging from **3–6 mm** in width.
- **Heavy corner rounding on all four corners**, most pronounced at the lower corners.
- **Extensive surface abrasion** across the yellow background, producing multiple lightened scuff patches where surface ink is worn away.

Color & Printing Quality

Yellow ink remains visible but uneven due to abrasion. Areas beneath tape appear darker and muted from adhesive discoloration. Green and orange elements show rub wear. Black outlines remain sharp with stable registration.

Paper & Structural Notes

Paper shows advanced oxidation along all edges. Tape application has stiffened the spine fold and replaced the original structural function of the spine.

Overall Impression

The front cover is **structurally altered**, with tape acting as a replacement spine over missing original material. Creasing, abrasion, and paper loss are extensive, though the primary artwork remains legible.

Back Cover — Observations (IMG_1391)

Walt Disney's Comics and Stories – Vol. 5 No. 8 (May 1945)

Photo Condition & Quality

Clear image showing the entire back cover, including subscription form and margins.



Scene & Composition

Subscription advertisement for **Donald Duck Pin-Up Pictures**, featuring Donald Duck beside a child figure, with pricing tables and a mail-in order form occupying the lower section.

Findings

- **Vertical crease approximately 6.0 inches (152 mm)** running through the central text area.
- **Horizontal crease approximately 4.0 inches (102 mm)** across the lower third through the order form.
- **Bottom-edge thinning and wear** with paper loss up to **5 mm** in several spots.
- **Lower-corner rounding**, left and right, with softened edges.
- **Heavy surface soiling and discoloration** across most of the background field.

Color & Printing Quality

Colors are muted from oxidation but remain readable.

Paper Condition

Uniform tan oxidation; no moisture rippling observed.

Overall Impression

Back cover shows heavy handling wear and creasing but remains complete and readable.

Interior Pages — Observations (IMG_1392–IMG_1395)

Walt Disney's Comics and Stories – Vol. 5 No. 8 (May 1945)

Photo Condition & Quality

Interior images clearly show full panels, gutters, and bottom margins, allowing tear inspection.

Page Color

Tan to medium brown.

Findings

Tear Documentation (Measured)

- **Interior Page A (IMG_1393)**
 - **Lower-center tear measuring approximately 2.75 inches (70 mm).**
 - Tear originates at the bottom edge and extends upward into the image area.
 - Tear edges are irregular with visible fiber separation; not confined to the margin.
- **Interior Page B (IMG_1392)**
 - **Vertical tear approximately 12 mm** in length.
 - Located at the **bottom center of the left-hand page**, oriented vertically.
 - Tear is narrow and straight, clearly distinct from corner creasing.
- **Interior Pages C–D (IMG_1394–IMG_1395)**
 - No additional full-thickness tears observed beyond those listed above.

Additional Paper Conditions

- Margin foxing present on multiple pages.
- Corner creasing visible, primarily at lower corners.
- Minor edge nicks along bottom margins.

Color & Printing Quality

Colors softened by age; halftone patterns consistent; linework remains crisp.

Structural Notes

Pages remain attached at the fold. Documented tears affect integrity but do not cause detachment.

Overall Impression

Interior pages are complete but **structurally compromised by two distinct tears**, one large and one small, in addition to oxidation and foxing.

Centerfold — Observations (IMG_1396)

Walt Disney's Comics and Stories – Vol. 5 No. 8 (May 1945)

Photo Condition & Quality

Clear two-page image with bottom edge and gutter fully visible.



Findings

- **Major tear at the lower center of the centerfold measuring approximately 3.25 inches (83 mm)**, extending upward from the bottom edge into the panel artwork.
- Tear shows irregular edges and visible fiber separation.
- **Secondary tear on the right-hand centerfold page measuring approximately 9–10 mm**, vertical in orientation, located near the lower margin.
- Staples remain engaged; fold shows darker toning from age.

Overall Impression

Centerfold remains attached but is **significantly torn**, with one large and one small tear materially affecting structural integrity.

Spine — Observations (IMG_1397)

Walt Disney's Comics and Stories – Vol. 5 No. 8 (May 1945)

Photo Condition & Quality

Clear side-profile image showing spine damage in full.



Findings

- **Extensive paper loss along the spine**, exposing interior layers.
- Tape reinforcement visible compensating for missing original spine material.
- Pronounced forward spine roll.

Surface Condition

Heavy abrasion with complete loss of original gloss and visible adhesive staining.

Overall Impression

Spine is **structurally compromised**, with adhesive acting as a functional reinforcement.

Upper Staple — Observations (IMG_1398)

Walt Disney's Comics and Stories – Vol. 5 No. 8 (May 1945)

Photo Condition & Quality

Clear, high-resolution macro image focused tightly on the upper staple area. The staple, surrounding paper fibers, and adjacent spine edge are fully visible with no blur or glare.



Findings

- Widened staple slot with tearing radiating outward from the entry point.
- Moderate oxidation visible on the staple metal surface.
- Surrounding paper fibers are fragmented and thinned, with stress evident around the opening.

Overall Impression

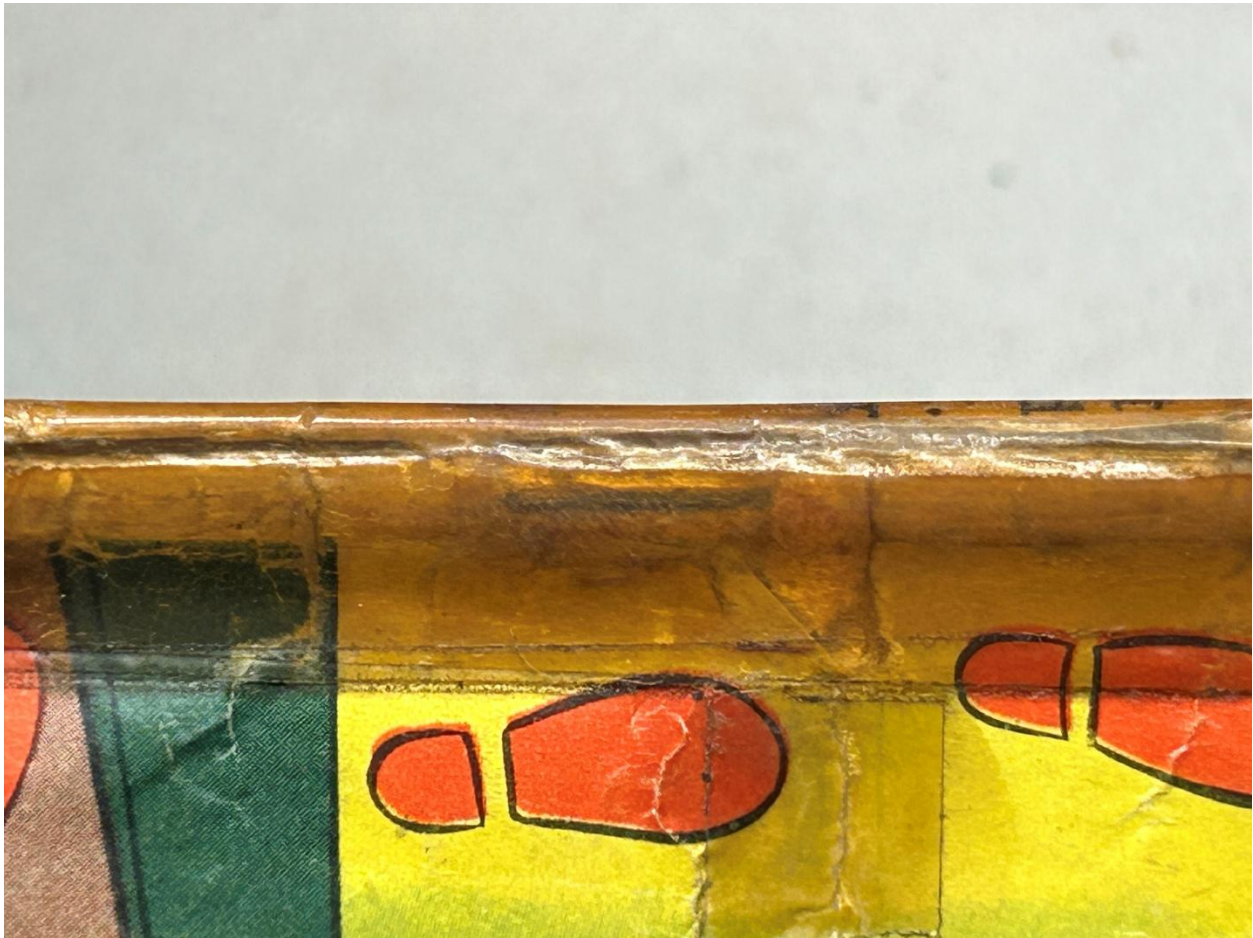
The upper staple remains engaged but is under significant stress due to surrounding paper loss and deformation at the staple slot.

Lower Staple — Observations (IMG_1399)

Walt Disney's Comics and Stories – Vol. 5 No. 8 (May 1945)

Photo Condition & Quality

Clear close-range image showing the lower staple, gutter area, and adjacent paper layers. Lighting is even and allows inspection of metal oxidation and paper integrity.



Findings

- Lower staple present with visible oxidation on the metal.
- Tearing and abrasion present in the paper immediately surrounding the staple opening.
- Paper thinning extends outward into the lower gutter area.

Overall Impression

The lower staple continues to hold the interior pages but is weakened by oxidation and surrounding paper degradation.

Brittleness Test — Observations (IMG_1400)

Walt Disney's Comics and Stories – Vol. 5 No. 8 (May 1945)

Photo Condition & Quality

Clear macro image capturing the flex of a page corner. The page edge, fiber texture, and bend geometry are clearly visible.



Findings

- Page corner flexes with noticeable stiffness.
- No cracking, flaking, or audible fiber fracture visible in the image.
- Paper shows dryness consistent with advanced oxidation.

Overall Impression

Paper exhibits advanced aging and stiffness but has not reached full brittleness at the time of observation.